

# SUMMERLIN SOUTH LITTLE LEAGUE

# 2011



# PARENT HANDBOOK

# TABLE OF CONTENTS

I.	THE LEAGUE.....	3
II.	LEAGUE PHILOSOPHY AND CONDUCT POLICY.....	5
III.	AGE DIVISIONS AND ELIGIBILITY.....	6
IV.	IMPORTANT DATES.....	8
V.	INSURANCE.....	12
VI.	LOCAL RULES & GUIDELINES OF SSL.....	13
VII.	SAFETY CONCERNS.....	15

# I. THE LEAGUE

## LEAGUE CONTRACT INFORMATION

Summerlin South Little League  
District 4 Nevada  
2775 Desert Marigold Lane  
Las Vegas, Nevada 89135  
299-6226 - league phone  
info@summerlinsouthll.org  
[www.summerlinsouthll.org](http://www.summerlinsouthll.org)

## LEAGUE BOUNDARY

The league encompasses all areas within the Summerlin master planned community south of Charleston Boulevard or west of Las Vegas 215 Beltway (including Red Rock Country Club).

## BOARD OF DIRECTORS

The Board of Directors was elected by the Membership of the league at the league's Annual Meeting on September 2, 2010. Immediately following the election of the Board of Directors the Board elected its officers. The elected Board and officer positions took effect as of October 1<sup>st</sup>. The number of Board members elected is determined at the Annual Meeting prior to the election. This year the Membership elected to have a maximum of 16 Board Members.

The purpose of the Board is to oversee the operation and funds of the league.

The Board has regular meetings that are posted on our website. However, during the season when the Board members have coaching, Little League parental, and officer duties they are subject to change. An up to date Board meeting schedule will be posted on the league's website.

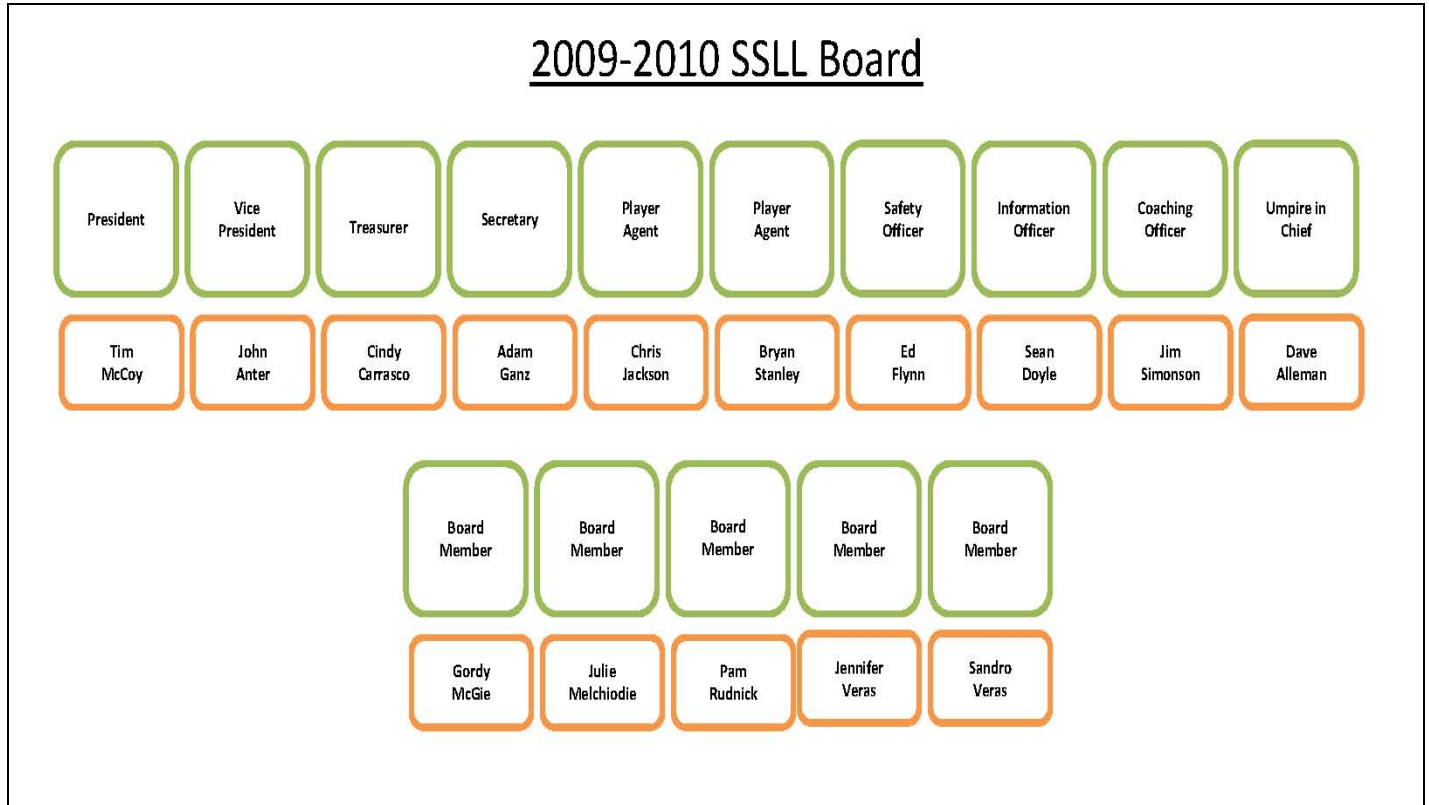
....

....

....

....

The following is an Organizational Chart for the League:



Board members can be reached by e-mail as follows:

Position	Email Address
President	<a href="mailto:President@summerlinsouthll.org">President@summerlinsouthll.org</a>
Vice-President	<a href="mailto:VP@summerlinsouthll.org">VP@summerlinsouthll.org</a>
Administrative Assistant	<a href="mailto:Info@SummerlinSouthLL.org">Info@SummerlinSouthLL.org</a>
Secretary	<a href="mailto:Secretary@summerlinsouthll.org">Secretary@summerlinsouthll.org</a>
Treasurer	<a href="mailto:Treasurer@summerlinsouthll.org">Treasurer@summerlinsouthll.org</a>
Player Agent #1	<a href="mailto:Agent@summerlinsouthll.org">Agent@summerlinsouthll.org</a>
Player Agent #2	<a href="mailto:Agent2@summerlinsouthll.org">Agent2@summerlinsouthll.org</a>
Coaching Coordinator	<a href="mailto:Coaches@summerlinsouthll.org">Coaches@summerlinsouthll.org</a>
Registration Documents	<a href="mailto:Registration@summerlinsouthll.org">Registration@summerlinsouthll.org</a>
Safety Officer/ID Badges	<a href="mailto:Saftey@summerlinsouthll.org">Saftey@summerlinsouthll.org</a>
Webmaster	<a href="mailto:Web@summerlinsouthll.org">Web@summerlinsouthll.org</a>
Auxiliary Chair	<a href="mailto:Fundraising@summerlinsouthll.org">Fundraising@summerlinsouthll.org</a>
Umpire in Chief	<a href="mailto:Rules@summerlinsouthll.org">Rules@summerlinsouthll.org</a>
Community Outreach Chair	<a href="mailto:Outreach@summerlinsouthll.org">Outreach@summerlinsouthll.org</a>

## II. LEAGUE PHILOSOPHY AND CONDUCT POLICY

*"Little League is a program of service to youth, it is geared to provide an outlet of healthful activities and a training under good leadership in the atmosphere of wholesome community participation. The movement is dedicated to helping children become good and decent citizens. It inspires them with a goal and enriches their lives towards the day when they must take their places in the world. It establishes the values of teamwork, sportsmanship and fair play."*

To further its philosophy as outlined above, the League has adopted a Conduct Policy for all participants. By registering your child in Summerlin South Little League you have agreed to abide by the league's Conduct Policy. If for some reason you are not willing to live up to the policy, you are encouraged to withdraw your child from the league with a refund per section IV of this handbook. Please read the Conduct Policy below carefully. If you have any question regarding it please ask a Board member for clarification. **This policy will be strictly enforced!**

### SUMMERLIN SOUTH LITTLE LEAGUE CONDUCT POLICY

Any Manager, Coach, Player, or Parent/Member who conducts himself/herself in an unsportsmanlike manner while participating in any Summerlin South Little League function shall be removed from further participation. Players, Managers, Coaches, or any party associated with any Summerlin South Little League team shall not ride, abuse, heckle, or make uncomplimentary remarks whatsoever, to any opposing player, umpire or team official. Any individual violating this regulation may be ejected from the game. **The team manager will be responsible for the conduct of his coaches, players and parents.**

**ANY PLAYER, MANAGER, COACH OR PARTY ACCOMPANYING A TEAM WILL BE SUSPENDED FOR THE REMAINDER OF THE GAME FROM THE TIME OF RULE INFRACTION IF THEY:**

1. Use profane language after being warned.
2. Make any unnecessary gesture in protesting an umpire's decision. Only the manager or coach may ask for a clarification of a rule and the umpire in chief must give him such clarification.
3. Throw helmets, bats or any other equipment.
4. Make unnecessary gestures to fans or opposing players.
5. Use alcoholic beverages of any kind on the playing field, dugout or on Summerlin or City parks or School District property.
6. Use tobacco on the playing field, dugout or general area of the game.

Any player ejected from the game will be required to remain in the dugout. If any MANAGER or COACH is ejected from the game, they will be asked to leave the park. If he/she refuses or creates a problem, the game in progress may be suspended until the problem is resolved. The above also pertains to parents, fans or members.

Note: The **minimum** penalty for any player, manager, coach, or member ejected from a game for any of the above will be:

- 1st time:       Suspended for 1 league game
  - 2nd time:       Suspended for 3 consecutive games
- This will be strictly enforced.**

The penalty for additional ejections or more flagrant offenses will be decided by the Summerlin South Little League Discipline Committee.

**There will be no toleration for fighting (deliberate body contact).** Any manager, coach, player, spectator, parent, or anyone associated with the league, caught fighting in or around the playing field, before, during or after a game or practice, will be suspended for 1 game and be subject to further disciplinary action. **There is no room for this type of behavior. There will be no warnings or no second chances when it comes to fighting.**

### **III. AGE DIVISIONS AND ELIGIBILITY**

For the purpose of Little League Baseball, league age is defined as the age attained prior to May 1 in any given season. Therefore, a youngster whose 12th birthday is on April 30, 2011 or earlier, has a league age of 12; and a youngster whose 12th birthday is on May 1, 2011 or later has a league age of 11. This principle applies regardless of age. The following is how Summerlin South Little League breaks down each division. Most of these requirements are per Little League Baseball and cannot be modified.

#### **Tee Ball (League Ages 4-5)**

The new Tee Ball division for ages 4-5 (WITHOUT coach pitch) is a **pure tee ball division (NEVER COACH PITCH)** designed to introduce our youngest players to the basics, fundamentals and fun of baseball. This division is a non-competitive division where youngsters can learn, develop and practice fundamental baseball skills at an early age and receive maximum enjoyment from the experience. Tee Ball players do not evaluate to play. There are no team standings or playoffs, and scores are not recorded.

#### **Rookies (League Ages 5-6)**

The New Rookies division (formally our Tee Ball division) is a combination **Tee Ball/Coach Pitch division** for league ages 5 and 6 year olds. This division is a non-competitive division where youngsters can learn, develop and practice fundamental baseball skills at an early age and receive maximum enjoyment from the experience. Players do not evaluate to play. There are no team standings or playoffs, and scores are not recorded.

#### **Minors -A (League Ages 6-8)**

The old Rookies division is now our Minors - 1A division. While the 1A Division is a **machine pitch division** for league ages 6, 7 and 8 year olds. 6 year olds **MUST** have played two seasons of Tee Ball or Rookie equivalent baseball to be eligible to play in Minors 1A. Players do not evaluate to play. Game scores and standings **ARE** kept and will be used to seed the teams for the end of season tournament.

**Minors - AA and AAA (League Ages 8-11)**

While the Minor 2A and 3A Divisions are composed of players who are league age 8, 9, 10 and 11, 8 year olds MUST have played two seasons of machine pitch equivalent baseball to be eligible to play in Minors AA Division. All players must attend one of two scheduled evaluations to be eligible for the draft. Game scores and standings are kept and will be used to seed the teams for the end of season tournaments. Players league age 12 that wish to play in the AAA Division must be granted a waiver by the District Administrator. If Summerlin South Little League feels there is a safety issue with a 12 year old playing in the Major Division, the League, with the parent's permission, may also request a waiver from the District Administrator to allow that player to play in the AAA Division.

**Majors - Little League Division (League Ages 10-12)**

The Majors' division is a Competitive Division where standings will be kept. Game scores and standings are kept and will be used to seed the teams for the end of season tournaments. Teams may also be selected to play in a District 4 Tournament of Champions after our end of season tournament ends. New players to this division must attend one of two scheduled evaluations to be eligible for the draft. 10 and 11 year olds may try-out for Majors, but are not guaranteed to make the Majors division.

**Juniors (League Ages 13-14)**

This division is the first to utilize a 90-foot base path. All players must attend one of two scheduled evaluations to be eligible to be selected to a Juniors' team. The Juniors' division is scheduled by and run at the District level.

**Seniors (League Ages 14-16)**

The Seniors' division is scheduled by and run at the District level.

**SIBLING OPTION**

If a parent has children that are close in age and could potentially be playing in the same Major or Minor Division, they may request that these children play on the same team as a "sibling option." This request must be in writing to the league President **prior to evaluations**. If a parent elects to take the sibling option, any manager that drafts one of the siblings must draft the other in the next round of the draft.

Remember, for the equity of all players and teams, once a player is drafted, he/she must play on that team. The league will **not** move players from team to team, with the exception of a player being moved up to a Major team to fill a vacancy.

- . . .
- . . .
- . . .

## IV. IMPORTANT DATES

FOR THE MOST UP TO DATE INFORMATION REGARDING THE LEAGUE'S SCHEDULED EVENTS, VISIT OUR WEBSITE FREQUENTLY [WWW.SUMMERLINSOUTHLL.ORG](http://WWW.SUMMERLINSOUTHLL.ORG)

Date	Event
01/15/11	Player Clinic
01/17/11	Martin Luther King Holiday - Monday
01/22/11	Evaluations - Mesa Park (See Reverse) No evaluations for Tee Ball or Rookie Divisions
01/29/11	Evaluations - Mesa Park (See Reverse) No evaluations for Tee Ball or Rookie Divisions
02/03/11	Commissioners' Meeting
02/05/11	Evaluations - Mesa Park (MAKE-UP DATE ONLY IF 1/22 OR 1/29 GETS RAINED OUT)
02/12/11	Safety Meeting & Pick Up Equipment - ALL DIVISIONS
02/19/11	Coaches Clinic
02/21/11	Presidents' Day
Late Feb/ Early March	Teams formed, players and parents notified, and practice begins
03/12/11	Parent Workshop & Scorekeepers Clinic
03/19/11	Opening Day Ceremonies at the Mesa Park; Games begin for the some divisions; Pictures taken before or after Opening Day Ceremonies
4/16-4/24	Spring Break - No Games
TBD	UNLV Event
TBD	51s Event
05/21/11	Post Season Tournament Begins
05/30/11	Memorial Day - No Games
June	TOC Tournaments Begin (Minors & Majors)
Late May/ Mid-June	END OF SEASON
06/09/11	Last Day of School
Mid-June	All Star Tournaments Begin
07/02/11	4th of July Patriotic Parade

### BOARD OF DIRECTORS MEETINGS

Board meetings are open to the public and all interested parents are welcome to attend and offer comments and suggestions; simply email [info@SummerlinSouthLL.org](mailto:info@SummerlinSouthLL.org) to be put on the agenda. The schedule has been established for the 2011 season. However, members of the Board are also managers, coaches and parents too. This may result in the majority of the Board not being able to make scheduled meetings during the season due to conflicts with team games and other volunteer activities. Therefore, the schedule is tentative and subject to change at any time. An updated schedule will be posted on our web site.

# Evaluations

NOTE: All players 9 and older must attend ONE evaluation according to their age

NOTE: Returning Majors DO NOT need to attend evaluations

## ALL EVALUATIONS WILL BE AT THE MESA PARK

Mesa Park is located at the south end of Town Center near Mesa Park Drive

Players may attend evaluations on *either* January 22<sup>nd</sup> or January 29<sup>th</sup>

<u>League Age/Div</u>	<u>Time</u>	<u>Last Name Begins With</u>
<b>MAJORS:</b>		
11 & 12	9:00 AM	A through M
11 & 12	10:00 AM	N through Z
<b>MINORS:</b>		
8*, 9 & 10**	11:00 PM	A through F
8*, 9 & 10**	12:30 PM	G through L
8*, 9 & 10**	1:30 PM	M through R
8*, 9 & 10**	2:30 PM	S through Z

\*Any player league age 8 who wishes to be considered for the AA Division must have played 2 seasons of Machine Pitch equivalent baseball prior to this season, and **MUST** note this desire on their registration prior to evaluations. Evaluating for the AA division is **NOT** a guaranteed placement in the AA division.

\*\*Any 10 year old player who wishes to be considered for the Majors Division must evaluate with the 11 and 12 year old group ONLY, during the **MAJORS EVALS NOT DURING THE MINORS EVALS**. NOTE: Any 10 year old who evaluates for the Majors Division is automatically subject to the Majors draft but is NOT guaranteed a position in the Majors Division. If a 10 year old player does not evaluate with the 11/12 year old group, he/she will not be considered for the Majors Division.

In order to be *drafted* into any division, a player **MUST** be evaluated. If a player does not participate in evaluations, he/she will be *placed* on a team by the Player Agent. Players who are league age 12 will be placed on a Major Division team unless a waiver from Little League of the rule mandating 12 year olds play in the Major Division is obtained. Players league ages 9-11 will be placed on a Minor division team, unless they are drafted into the Majors Division. If a player does not participate in evaluations, he/she will not be eligible to be drafted into the Major Division and must play in the minors for the entire season, except for 12 year olds as noted above. The only exceptions to this will be (1) a pre-approved waiver; or (2) an unexpected emergency. If a player has a prior commitment and cannot reasonably participate in any set of evaluations, that player must present the prior commitment to the league

President at least one week prior to the beginning of evaluations. The Executive Board will then review the request and determine if it is an excusable reason. If it is determined to be excusable, then that player would be eligible to be drafted in any division. If it is not excusable, then that player will not be eligible to be drafted into any division and will be placed on a minor division team for the entire season with the exception of 12 year olds as noted above. In the case of an emergency that prevents a player from participating in any of the evaluation sessions, that player must present the circumstance of the emergency to the President within two days following the last evaluation session. The Executive Board will review the circumstance and determine if it was excusable. If it is determined to be excusable, then that player would be eligible to be drafted in any division. If it is not determined to be excusable, then that player will not be eligible to be drafted into any division and will be *placed* on a minor division team for the entire season with the exception of 12 year olds as noted above.

## 2011 Juniors/Seniors Evaluations

**Juniors Evaluations (13, 14 & 15 year olds) - CURRENTLY SAME DATES AS MINORS AND MAJORS ABOVE, BUT MAY CHANGE - EVALS WILL BE HELD AT OXFORD PARK.**

**Seniors Evaluations TBD - will be held in late March/early April.**

### THE SEASON

#### Practices Begin

Practices for all Divisions will officially begin the last week of February. If a player has not been contacted by a manager before this date, please let a league official know so we can follow up on the situation.

#### Games Begin

Games will begin the week of March 19, 2011, for the Major and the Minor divisions. The Minors 1A, Rookie and Tee Ball divisions' regular season will begin Late March/early April. The regular season for all divisions will end by the end of May/early June. There will not be any games during the week of public school spring break or the weekend of Memorial Day. However, coaches may still elect to have practices during those times.

. . . .

. . . .

. . . .

. . . .

. . . .

## End of Season Tournaments

The **Tee Ball and Rookie** divisions will not have an end of season tournament. These divisions are considered purely non-competitive and instructional. Therefore, an end of season tournament would not be appropriate. However, each team will receive awards from the League for each of their players.

All divisions except Tee Ball and Rookies will have an end of the season tournament. Bracketing for the **Major and Minors'** tournaments will be determined after the regular season and will be based on the final regular season standings.

In the event of a **two-way tie**, the better seed will be determined as follows:

1. The team with the best record in head to head play;
2. The team with the best overall record ignoring interleague play;
3. Runs Against;
4. Runs For; or
5. Coin flip

In the event of a **three-way tie**, the following will apply:

1. If the teams do not have identical records against one another, and one team has a best record against both other teams, and another team has a winning record against the final team, the first team shall get the first pick of their team designation, the second team gets the second pick, and the last team is assigned the remaining designation.
2. If one team has a better record against both of the other teams, and the two other teams have the same record against each other, then the first team would get the first pick for team designation, and the other teams would be decided as outlined above re: a two-way tie for the second next seed.
3. If two teams have the same record against each other, and both have a better record than the last team, then the first two teams would be decided as outlined above re: a two-way tie for the first two seeds; the final team being assigned the lowest of the three seeds.
4. If each team has a winning record against one other team in the three team group, and a losing record against the other team in the three team group, the priority for choosing designations shall be chosen based on overall winning percentage within the three team group, any ties in winning percentage within the three team group will be broken by coin flip.

The team finishing with the best record in the regular season in the AAA and Major Divisions will represent Summerlin South in the District's Tournament of Champions, in their respective divisions. The AAA and Major Division team that finishes highest in the post season tournament will also represent Summerlin South in the District's Tournament of Champions. If this is the same team, then the AAA and Major team that finishes second highest in the post season tournament will represent Summerlin South also.

**Junior/Senior** divisions will have an end of the season tournament/awards according to their interleague coordinating representatives.

## **MANDATORY MANAGER'S MEETING**

Managers from every team will be required to attend their respective Manager's meeting to receive practice field assignments, equipment and partake in the League Safety Meeting. The meetings will be held on February 12, 2011. Please, no parents at this meeting, Managers only.

## **SCORE KEEPERS CLINIC**

A score keeper clinic will be held once teams begin practicing. This clinic should be attended by at least one volunteer from each team in the Major, AAA, AA and A divisions. This clinic will provide instruction on how to keep a good score book and outline procedures on keeping the pitch count. More information will be provided to the teams as arrangements are finalized.

## **TEAM PARENT WORKSHOP**

A team parent workshop will be held once teams begin practicing. This workshop should be attended by at least one volunteer from each team in the Major, AAA, AA, A, Rookies and Tee Ball divisions. This workshop will provide ideas on how the team parent can help the managers organize team activities and make the whole team experience more fun. More information will be provided to the teams as arrangements are finalized.

## **OPENING DAY**

An opening day celebration is being planned for March 19, 2011 at Mesa Park. The plans for the day are being worked on but are anticipated to include a festive day full of activities, competitions and some regular season games. More details will be provided to the teams once the details are finalized.

## **PICTURES**

Pictures will be taken during the opening day celebration which is scheduled for March 19, 2011, at Mesa Park. A detailed schedule of when each team's pictures are scheduled will be developed once the teams are established and games schedules are finalized. PICTURES ARE NOT INCLUDED IN THE REGISTRATION FEES AND WILL BE THE RESPONSIBILITY OF EACH PLAYER DEPENDING ON THE PICTURE PACKAGE SELECTED.

## **V. INSURANCE**

Summerlin South Little League, through Little League Baseball, has purchased insurance to cover the players, managers, coaches, volunteer umpires, and league officials during Summerlin South functions. This insurance will act as a secondary insurance to a person's personal, employer or school insurance. If a manager enlists the help of parents during a practice and these parents have not been appointed by the league as a volunteer to the team, including having a background check ran on them, they are not

covered by the league's insurance. Only league approved volunteers will be covered. Little League insurance is designed to afford the best possible protection to all participants at the most economical cost to the league. **It ONLY SUPPLEMENTS other insurance carried under family policies or provided by the parent's employer.** The League encourages parents to obtain appropriate health insurance and not rely solely on the League's insurance. If an injury or accident does occur during a practice, game or other official Summerlin South function, please notify the Safety Officer as soon as possible. In order to be eligible for coverage under the League's insurance there are claim forms that must be filled out by the party that was injured, then the Safety Officer, and the forms must be submitted to Little League Baseball for processing.

## **VI. LOCAL RULES & GUIDELINES OF SLL**

Summerlin South Little League follows the Official Regulations and Playing Rules established by Little League Baseball. These are the same rules and regulations that every chartered Little League in the country must follow as a condition of their Little League Charter. Each team will be provided a copy of these rules and regulations for their use and understanding during the season. If you would like a personal copy of the rules and regulations, you may contact Little League Baseball's Western Region Headquarters at Western Region Headquarters, 6707 Little League Drive, San Bernardino, CA 92407; 909-887-6444 phone, 909-887-6135 fax, or email [westregion@littleleague.org](mailto:westregion@littleleague.org).

**ALL MANAGERS SHOULD HAVE A BASIC UNDERSTANDING OF ALL RULES AND REGULATIONS WITH THE OFFICIAL REGULATIONS AND PLAYING RULE BOOK (ORPR BOOK or GREEN BOOK).**

The rules and regulations within the ORPR Book allow the local league some room for modifications. The Summerlin South LL policy is to play by the published rules with minimal modifications. The following are clarifications and modifications that Summerlin South LL has adopted for all Divisions. Each team will be provided a copy of the Local Rules and Regulations for their respective division. If you would like a personal copy of the Local Rules for your child's division, they are available at the League's website [www.SummerlinSouthLL.org](http://www.SummerlinSouthLL.org).

### **GRIEVANCES**

From time to time there will be situations before, during or after games that will warrant the league to investigate and take appropriate actions. Since this league is for the enjoyment of the children, any reported inappropriate action by any manager, coach, player or spectator that is detrimental to the enjoyment of the game for the kids and their parents will be investigated. Two different types of situations may arise. The first is an official protest of a game. The other is a violation of the Conduct Policy by a manager, coach, player or spectator.

In the case of a game protest, the manager protesting the game must do so during the game according to the **ORPR BOOK** and then submit a written explanation to the league President within 24 hours of the game. The Discipline and Protest Committee will review the written explanations submitted by the manager and umpire, review the rule book and make a decision within 7 days of the protested game. If

the protest is upheld, the game will resume at the point the protest was made. If it is not upheld, then the game stands as it was completed on the original day of play. In the case of a Conduct Policy violation or non-game rule grievance, whoever initiates the grievance must notify the Division Coordinator (Commissioner) of their division of the grievance, preferably in writing. The parties involved in the situation may be asked to meet with The Discipline and Protest Committee. The Board of Directors has delegated to the Discipline and Protest Committee complete and total authority to establish any and all procedural aspects of a reported grievance, with the guiding principal that all sides shall be equally heard and equally evaluated. Decisions by the Discipline and Protest Committee are guided by the **ORPR BOOK** and are final.

## **POSTPONEMENT OF GAMES**

The only postponement of games that will be allowed is due to inclement weather, power failure, acts of God, etc. The Board of Directors of Summerlin South, only, will make the determination of postponement of a game.

## **MISCELLANEOUS**

Vehicles of any type will not be allowed in park areas of any of Parks at any time with the exception of vehicles conducting official league business. Examples of official league business include delivering of supplies to the concession stand and dropping off league equipment, pictures, trophies, etc. at the main building of the park. A manager or his/her coaches will not be allowed to drive their vehicles into the park area to drop off team gear before, during or after games and practices. Vehicles must remain in the designated parking lot at all times. This is a safety concern to the league and will be strictly enforced.

It is a Little League Rule that all players and coaches must remain in the dugout at all times. If a player needs to use the restroom or leave the dugout, the Manager or Coach in the dugout must notify the Umpire, if applicable, and have the player's parent or appropriate adult escort them to the restroom.

### **On Deck Batters**

Little League does not at anytime permit an "On Deck Batter," even in between innings.

#### **ORPR Rule 1.08:**

**Note 1:** The on-deck position is NOT permitted in Tee Ball, Minors or the Majors Division.

**Note 2:** Only the first batter of each half inning will be permitted outside the dugout between half innings in Tee Ball, Minors or Majors divisions.

. . . .

. . . .

A manager, coach or player ejected from a game, for any reason, will not be allowed to participate in the teams' next game. The ejected manager, coach or player will not be allowed within the park or school of the teams' next game at any time during the day of the game. If a manager, coach or player violates this rule, he/she may be subjected to further discipline.

Batters throwing bats will not be tolerated. **The first time a bat is thrown the player and their team will be warned. The second time, and thereafter, each time a player throws the bat the batter can be called out.**

## **VII. SAFETY CONCERNS**

The safety of the players, coaches and spectators is always our number one priority. There is always some risk of injury in any sporting event. The league will do as much as it can to assure that the playing fields and the league-supplied equipment adequately protect the players, coaches and spectators.

We would like to offer the following suggestions as to how you can help the league protect the players:

### **PROTECTIVE CUPS**

The official rules state that "All male players must wear athletic supporters. Male catchers must wear the metal, fiber or plastic type cup, and a long-model chest protector. Female catchers must wear long or short model chest protectors" However, even though the rule does not require male players other than the catcher to wear a protective cup, Summerlin South Little League **STRONGLY SUGGESTS THAT ALL MALE PLAYERS WEAR A PROTECTIVE CUP AT ALL TIMES DURING GAMES AND PRACTICES.** We cannot enforce the wearing of cups other than the catcher, so it is the parent's responsibility for assuring that their son wears a protective cup at all times.

### **BATTING HELMETS**

Summerlin South Little League will not provide each team batting helmets this season, however, they are available if needed by any player or coach who requests them. If a player has his or her own helmet it must also meet Little League standards. This means the helmet must meet NOCSAE specifications and bear the NOCSAE stamp as well as an exterior warning label. Manufacturers have advised that altering helmets in any way can be dangerous. Altering the helmet in any form, including painting or adding decals (by anyone other than the manufacturer or authorized dealer) may void the helmet warranty. Helmets may not be re-painted and may not contain tape or re-applied decals unless approved in writing by the helmet manufacturer or authorized dealer. A helmet that has been painted on or has non-manufacturer applied decals will not be allowed; this is a Little League Baseball rule and must be followed.

### **Face Masks on Batting Helmets**

Face masks are not mandatory for Summerlin South Little League teams; however, they are **STRONGLY** recommended.

## **CHILD MOLESTATION**

The subject of child molestation has become a significant concern to all involved with youth sports. There is a disturbing trend of increased cases of child molestation in youth sports all across the country. Every league official, manager, coach and parent must do what they can to assure that the adults working with our youth are not gaining the youngster's trust and confidence with the purpose of physically abusing them. The National Center for Missing and Exploited Children, the FBI and the mothers and fathers of some victims offer the following tips to help leagues and parents protect the children.

**BACKGROUND CHECKS:** Little League Baseball requires background checks on all of its managers, coaches, Board of Directors and any other person, volunteers, or hired workers, who provide regular service to the league and/or have repetitive access to, or contact with, players or teams. All Managers, Coaches and volunteers must have a background check completed and approved by the board of directors prior to participating in practices and games with the team. All volunteers must wear the league issued ID badge (Summerlin ID card with current "sticker" certifying that a background check has been cleared) during ALL games and ALL practices. Contact the Safety Officer at [Safety@SummerlinSouthLL.org](mailto:Safety@SummerlinSouthLL.org) to obtain information about a background check and sticker.

**DON'T TURN YOUR CHILD'S COACH INTO A BABYSITTER:** Don't drop your child off at games and practices and leave.

**TALK TO YOUR CHILD AND THEN LISTEN:** Describe for your son or daughter what you consider inappropriate behavior by a coach (improper touching of his players, showing them pornographic material and so on). Make sure your child knows that if a coach says, "You can't tell your mom or dad" about something the coach is doing, the first thing the child should do is tell mom or dad. Assure your child that he or she will never get in trouble with you for telling the truth. If your child's interest in his sport or team suddenly diminishes for no apparent reason, ask why.